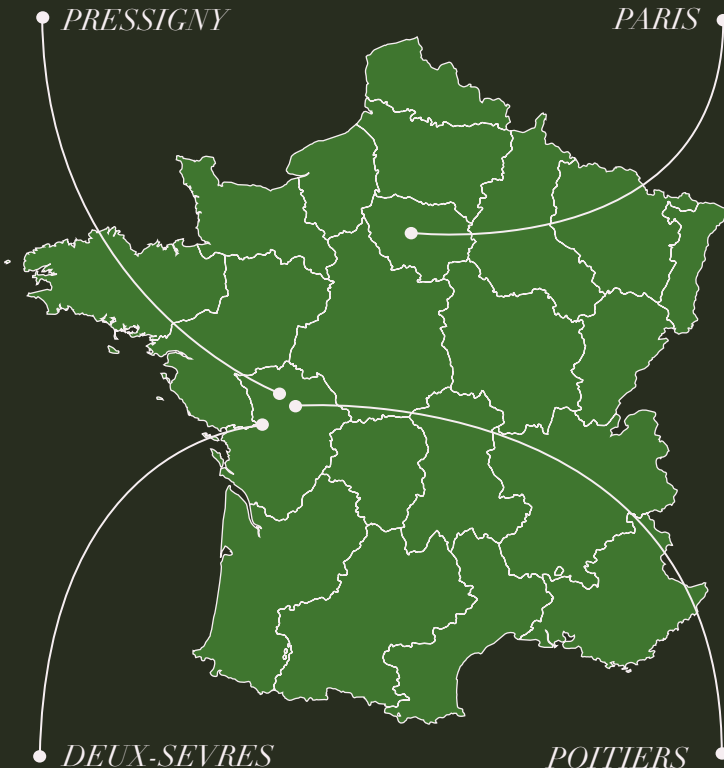




LE PRIEURÉ





Le Prieuré and La Tour
14, Place de l'Eglise
79390 Pressigny
France

TEL: +33 (0)6 74 04 53 15 (WhatsApp only)
E-MAIL: psdormer@gmail.com
SIRET : 8333648400016

WELCOME TO LE PRIEURÉ, PRESSIGNY

CONTENTS

6	EMERGENCY NUMBERS
7	WELCOME
8	LE PRIEURÉ
9	DISCOVER LOCAL
10-19	THE HOUSE
20	DOGS
22	ORDERING BREAD & WINE
24	ESSENTIAL INFO
25	DESTINATION VISITS



A VERY WARM WELCOME TO LE PRIEURÉ FROM THE DORMER FAMILY.

We are very happy to invite you to enjoy our family home and hope that you will love it as much as we do!

It is very quirky and has ancient medieval stairs, steps and low doorways, so take care!

We hope you will find lots of information in these pages to enhance your holiday.

There is more information on the website, from dog walks, to garden visits, the best theme park in Europe, medieval villages to explore and our local water skiing lake to leave the teenagers breathless....and with contact information for them all.

The first question is always about the wi-fi code, so here it is:

welcometothepriory

VERY IMPORTANT INFORMATION TO TELL YOUR FAMILY, FRIENDS AND GUESTS!

Le Prieuré is on a fosse sceptique, otherwise known as a septic tank. The only things that can be put down the loos must have been eaten or drunk. Nothing else apart from 2 ply paper can be flushed.



EMERGENCY NUMBERS

17 – Police

18 – Fire Service

15 – Ambulance

112 – European international emergency number, where you can be tracked from your mobile.

Saint-Loup-Sur-Thouet Medical Centre

Tel: +33 (0) 5 49 64 60 07

Dr. Carole Barbezat speaks English

Address for Le Prieuré:

14, Place de l'Église

Pressigny 79390

France

Contact for Paula: +33 (0)6 74 04 53 15

(Only via WhatsApp)

LE PRIEURÉ

Le Prieuré at Pressigny is a beautiful fourteenth century priory to be found in a small village location in the Deux-Sèvres department of the Poitou-Charentes region of France. It is about 130 kilometres inland from La Rochelle.

The nearest airport is Poitiers (40.5km) which is about forty minutes from the house.

The nearest main line train station is at Poitiers, which connects to Paris and Lille (with onward connections to London).

The nearest small town is Thénézay, 7km away. The nearest port is Saint-Malo, 313km.



DISCOVER LOCAL

Country walks - Riding - Golf - Fishing - Lake
- Lakeside beach - Canoeing - Windsurfing -
Water skiing

A comprehensive list of activities and attractions within the local area can be found on our website under the Discover page.

Thénézay (7km): bank and cashpoint, supermarket, bakery, patisserie, café, bar, petrol station, post office, local market on Sunday mornings.

Gourgé (7km): convenience store & post office (in the convenience store)

Saint-Loup-de-Thouet (9km): restaurant, bar, hotel, pizzeria (does take-aways), convenience store, bakery, antique shop, post office, medical clinic.

Parthenay (15km): hypermarkets, supermarkets, shops, post office, bars and restaurants, banks, medical center, market on Wednesday morning. Beautiful medieval quarter to explore.

Thouars (25km): Great local market on Friday mornings, supermarkets, and general shops found in town.

MARKETS

Sunday -	Thénézay	8am to 12 lunchtime
Wednesday -	Parthenay	8am to 12 lunchtime
Friday -	Thouars	8am to 12 lunchtime
Saturday -	Airvault	8am to 12 lunchtime



KITCHEN

The kitchen has an electric hob, a gas range and a multi-function microwave, as well as a washing machine, an American fridge freezer and a dishwasher. When you arrive we will happily demonstrate how each works as we show you around.

The hob has a lock on the controls. Press on the top right button to release the lock.

The gas hob can be delightfully eccentric when trying to light, so we have left matches for your convenience. The oven lights automatically by turning the knob and holding it in until you hear and see the gas light.

There is an independent oven temperature gauge in the kitchen to help if you are cooking anything that requires a precise temperature. If it is a really special dish or cake, the oven in L'Atelier is electric and easier to control. Please ask to use it if you need to!

GARBAGE DISPOSAL & RECYCLING

Please take all glass to the re-cycling bin at the bottom of the hill, two minutes past the church.

Please do not leave any glass in the wood shed, nor in the green or yellow bins. French refuse collectors have an inbuilt radar where glass is concerned and will not take bins with glass in, which will make you very unpopular with the next guests, particularly in summer!

COMPOST

Please put compost in the bin provided (no egg shells please!) And when full leave at the entrance to L'Atelier garden. The bin will be emptied, washed and returned to you. If you come back next year you may find your veggies growth rate improved by being grown in this year's composted fruit and veg peelings!

RECYCLING

The recycling is collected every two weeks, so please compress everything as much as possible and place it in the yellow lidded bin.

RUBBISH

Any rubbish that cannot be recycled in the yellow lidded bin can be disposed of in the green lidded bin (apart from glass).

Access to the garden is required for taking out the bins and recycling. This will be done as discreetly as possible so we don't disturb your holiday.

CLEANING

You will find cleaning equipment under the kitchen sink and a vacuum cleaner at the bottom of the stairs.



THE DRAWING ROOM AND LIBRARY

The drawing room has been deliberately designed with adults in mind, to provide an oasis! For children, there is the adjacent library where they can curl up with a book, choose to watch a DVD or play a game from one of the many in the playroom on the top floor.

The fire may be lit in cool weather and there is wood in the wood shed. There is a knack to lighting the fire, so please ask Paula for a demonstration. The switch on the bottom right starts the fan, which will heat the room in minutes when the fire is lit.

The piano belongs to Alice Dormer. She is delighted for you to play it and to make use of her music, but asks you to respect both and replace her music where you found it. Please don't let children plonk!!

DINING ROOM

The dining table seats 12, in a friendly manner!

The armoire in the dining room is full of family china and we would ask you to please not attempt to open the doors. Everything for your use is stored in the kitchen.

The heating and hot water control is in the dining room. The boiler and programmer are set to give you constant hot water and we would be grateful if you did not touch the controls.



BEDROOMS & BATHROOMS

The bedrooms on the top floor have adjoining bathrooms. The house is fourteenth century and with a house full of people the water pressure can occasionally seem to be fourteenth century too! Please be patient with the bath filling on the top floor and start with plenty of time! It is sporadic - and could just be down to the pressure in the area. We have never been able to discover a hard and fast reason!



PLAYROOM

We love children enjoying the playroom, which is full of Dormer family games, some going back three generations. There is a large dressing up box that has seen many an impromptu performance, from three year olds to sixty-three year olds! Please feel free to be truly inventive!

The playroom is on the third floor. There are chains on the windows to prevent any accidents, but please supervise your children at all times. There is a TV with internet connection in this room for entertaining children on rainy days!

In the event of a storm, please unplug the television, and all other electrical appliances.







There is a bbq in the garden and you will find charcoal, fire-lighters and matches for your use under the loggia, where the table seats twelve. There are other tables in the garden you can use for additional guests.

Please will you put all cushions and tablecloths inside at night, either in the house or in the woodshed to stop them becoming wet with dew overnight.

If you would like to borrow bikes, please ask. While we are happy to loan you our bicycles, we ask you to check them over prior to riding as we cannot accept liability if you have an accident. Please bring cycle helmets with you.

Please would you be kind enough to ensure the garden gates are closed and secured when you are in the garden, or go out.

SWIMMING POOL & GARDEN

We have a lovely swimming pool suitable for all ages. The Roman steps at one end allow for easy access. In summer the pool offers a welcome escape and in general it's warm enough for guests without heating.

However, the pool can be heated and we require five days' notice if you would like it warmed in preparation for your stay. A payment of €150 to heat the pool is required on arrival.

It is your responsibility to place the safety cover over the pool when it is not in use. This is to comply with French laws and is a safety precaution to prevent children falling into the pool accidentally should adults not be in the vicinity. We will demonstrate how the locking mechanism for the pool cover works when we show you around at the beginning of your stay. We ask you to ensure the pool is safely covered whenever not in use. An adult must be present at all times when children are in or around the pool.



FOUR-LEGGED FRIENDS

Well-behaved dogs of all shapes and sizes are welcome. Le Prieuré has a private, secure garden that are ideal for four-legged friends.

We have dog bowls, blankets, cushions, toys, treats, poo bags and even shampoo! If your dogs prefer their home comforts, please feel free to bring their bed or basket and favourite toys along. We can have a maximum of two dogs in Le Prieuré.

Country trails start from right outside Le Prieuré. Please keep dogs on leads around populated areas. Many country walks, riverside trails and woodland paths in the area are suitable for dogs. For walks around Le Prieuré and further afield, please visit our web page Special Extras/Dogs. Here you will find some favourite walks mapped out for you. These can easily be downloaded from our site and printed.



DOG SITTING

For days out, activities and restaurant bookings that aren't suitable for dogs, a dog sitting service is available. Please enquire about this service. Paula will be happy to help on +33 (0)6 74 04 53 15 (WhatsApp only).

DOG DEDICATED

The local veterinary clinic in Parthenay (English speaking), will arrange an appointment for the necessary tablets for taking your dogs back to England, or any other dog-related issues.

Veterinary Clinic Les Charmilles. 7 rue de l'ysier, 79200 Parthenay, France +33 (0)5 49 64 33 64

THE LOCAL BOULANGERIE

Delicious bread, gateaux, and pastries are available in Thénezay from our local baker, Monsieur Bergeron. Whether you would like baguettes, pains au chocolat, croissants, scrumptious pastries or a wonderful cake for a special occasion, Monsieur Bergeron and his assistant Sarah are delighted to help. If you need any help with placing your order, Please WhatsApp Paula on +33 (0)6 74 04 53 15

Or you can visit the boulangerie, situated in the square, open daily (bar Wednesday) from 7am to 1.30 pm and 4pm to 7:30pm. Sunday the boulangerie is open until 1:30pm, but get there early as it's the busiest day of the week!



BEFORE LEAVING:

Please ensure ALL glass is taken to the recycling prior to your departure. A charge of €25 will be made for any glass that is not correctly recycled.

Please do not put unwanted food in the bins at the end of your holiday. If you could place any vegetables in the composting bin, we will dispose of any other food if you leave it in the fridge. Bin collections have been cut and in 40 degrees of heat, the bins can become very unsavoury.

Please would you strip the bottom sheet, the quilt cover and the top pillowcases from beds and leave them at the bottom of the stairs before you leave. The bedcovers and eiderdowns are antique and we would be very grateful if you would leave these neatly folded when not in use. Thank you!

BORING BUT ESSENTIAL!

Kitchen: The kitchen range is fed by bottled gas. There is a spare canister in the woodshed, should you run out (blue and metal). To change the gas bottle, please ask Paula to show you how if you are unfamiliar with bottled gas.

The electric hob will beep at you if anything is put on the hob other than pans for cooking! Please will you clean it with the specialist cleaner as others will scratch the surface.

The peach work surface is not heatproof, hence the thick wooden board for resting hot pans. The tiled surface is fine for hot pans.

The microwave and the range have grills. The instructions are pretty self evident, but any problems, please ask.

The American fridge freezer will beep at you if the doors are left open for more than a minute. There is an electronic button on the door that will stop the beeping if you need to keep the door open for cleaning or stocking.

If you require any utensils that are not provided, please ask. We have a bread maker and lots of other kitchen implements that we have not cluttered the kitchen with. We have tried to be as comprehensive as possible for every day cooking, but if you find anything lacking, please ask.

Playroom: Please ask children and adults to respect everything in the room. There are wonderful books and dolls we really want you to enjoy. Sadly on occasions we have found toys, dolls and games destroyed and the room left a mess. This is our family home and we hope you will tidy the playroom and leave it as you found it, having had a wonderful time enjoying all the great things in it.

Any time tidying the playroom after guests or replacing damaged toys, dolls or games will sadly have to be charged for.

We get massive storms on occasion. When this happens, please disconnect the TV in the playroom and any other electrical appliances in the house for the duration of the storm.

If you have any questions or would like help booking a restaurant, organising an outing or just information about things to do and visit in the area, Please WhatsApp Paula on +33 (0)6 74 04 53 15

DESTINATION VISITS

We offer cultural visits for students and visitors to many local sites. A small selection follows, that you might enjoy visiting. Please ask Paula if you would like an accompanied tour.

PUY DU FOU

From a show in the Roman Arena to a Norman village invaded by Vikings or an interactive walk through the trenches of the First World War, Puy du Fou is France's best kept secret. From 9am to midnight, guests are open mouthed at the shows and displays on offer at Puy du Fou, all based on the history of France, from pre-history to the modern age.

www.puydufou.com

FUTUROSCOPE

In Poitiers, the nearest large city to Le Prieuré, Futuroscope offers forty science based attractions in an area of mind boggling buildings – from the upside down house to the cube building that has one point in the ground!

www.futuroscope.com

PARTHENAY

Parthenay and the amazing medieval weavers and dyers road. Pilgrims on the route to Santiago de Compostela from the north of France and Britain would cross the River Thouet and enter the town through the Porte St. Jacques. Hostelrys and shops up the cobbled street would then greet them. Today, it's a perfect introduction to medieval France and some of the customs of pilgrimage and weaving and dying.

POITIERS

The Baptistery of St. John, reputedly the oldest Baptistery in France and the oldest Christian building in the west, built in 360. It is a classic example of Merovingian architecture. With frescos painted in the 12th to 14th centuries still clearly visible, it is a fascinating place to visit, in almost constant use for over 1600 years.

ST. LOUP

A nearby medieval village on the river, with a stunning, privately owned chateau where it is possible to arrange a private visit.

THE TUMULUS DE BOUGON

The Bougon burial mounds are among the oldest megalithic structures on the Atlantic coast, built in the 5th millennium BC (2000 years before the pyramids of Egypt). The number of monuments and their quality of preservation is a rare testimony to a civilization that has now disappeared.



Puy Du Fou



Futuroscope



Parthenay



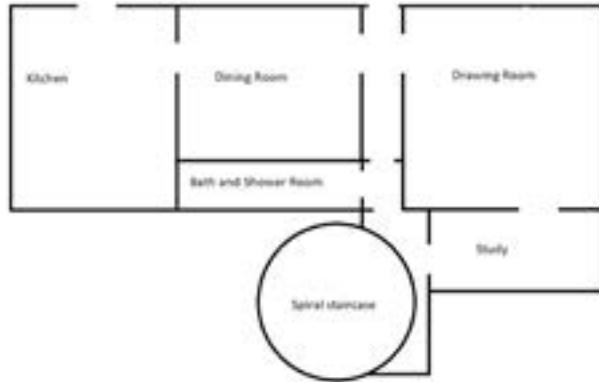
The Tumulus de Bougon



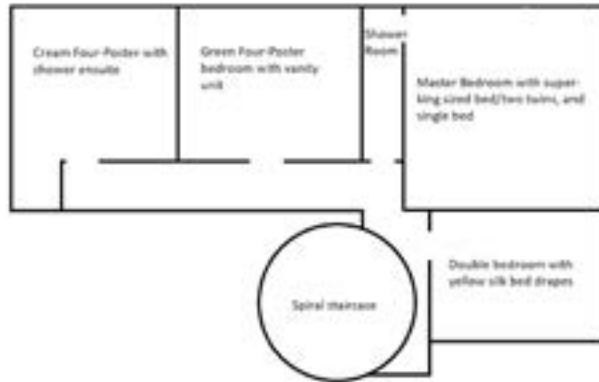
St. Loup

LE PRIEURÉ

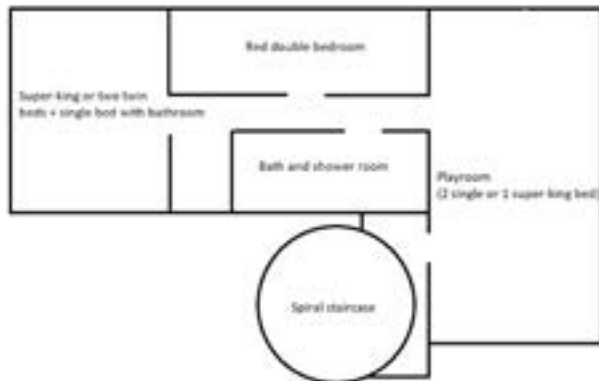
Ground Floor



First Floor

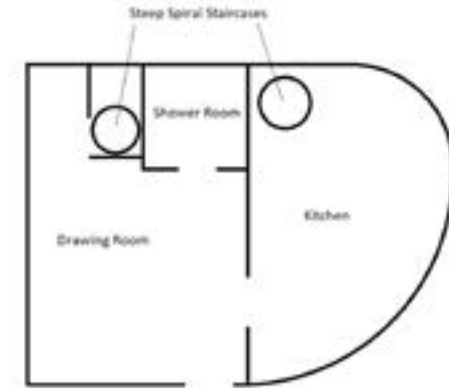


Top Floor



LA TOUR

Ground Floor



First Floor



UNIQUELY
FRENCH
