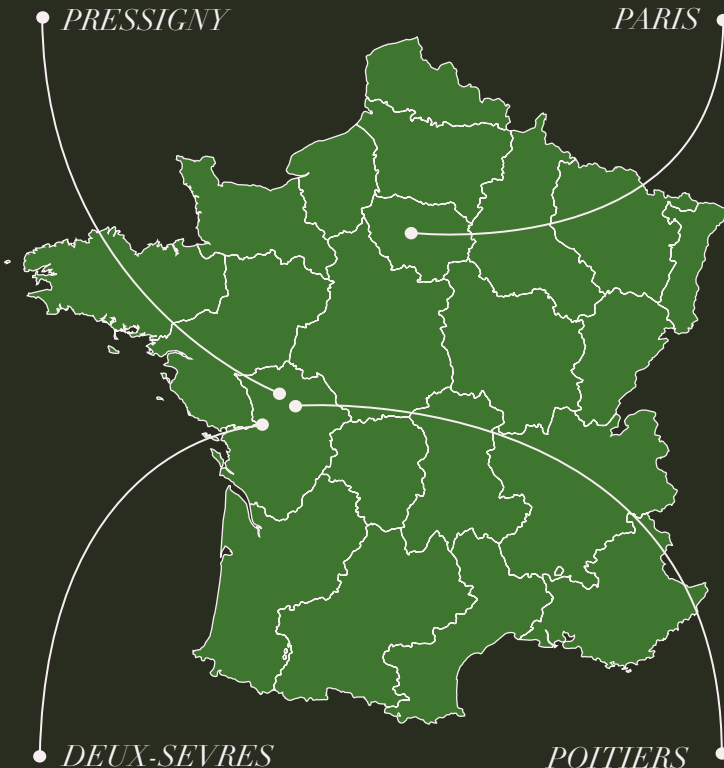




# LA TOUR





Le Prieuré and La Tour  
14, Place de l'Eglise  
79390 Pressigny  
France

TEL: +33 (0)6 74 04 53 15 (WhatsApp only)  
E-MAIL: psdormer@gmail.com  
SIRET : 8333648400016

# WELCOME TO LA TOUR, PRESSIGNY

---



## CONTENTS

6	EMERGENCY NUMBERS
7	WELCOME
8	LA TOUR
9	DISCOVER LOCAL
10 - 17	THE HOUSE
20	DOGS
22	ORDERING BREAD & WINE
24	ESSENTIAL INFO
25	DISCOVER LOCAL



## A VERY WARM WELCOME TO LA TOUR FROM THE DORMER FAMILY.

We are very happy to invite you to enjoy our family home and hope that you will love it as much as we do!

La Tour is believed to be a 15th century extension to the 14th century main house and is unique with low door frames, beams and steep staircases, so take care!

We hope you will find lots of information in these pages to enhance your holiday.

There is more information on the website, from dog walks, to garden visits, the best theme park in Europe, medieval villages to explore and our local water skiing lake to leave the teenagers breathless....and with contact information for them all.

The first question is always about the wi-fi code, so here it is:

**welcometothe priory**

**VERY IMPORTANT INFORMATION TO TELL YOUR FAMILY, FRIENDS AND GUESTS!**

La Tour is on a Fosse Septique, otherwise known as a septic tank. The only things that can be put down the loos must have been eaten or drunk. Nothing else apart from 2 ply paper can be flushed.

### EMERGENCY NUMBERS

17 – Police

18 – Fire Service

15 – Ambulance

112 – European international emergency number, where you can be tracked from your mobile.

Saint-Loup-Sur-Thouet Medical Centre

Tel: +33 (0) 5 49 64 60 07

Dr. Carole Barbezat speaks English

Address for Le Prieuré:

14, Place de l'Église

Pressigny 79390

France

Contact for Paula: +33 (0)6 74 04 53 15

(Only via WhatsApp)



## LA TOUR

La Tour at Pressigny is part of Le Prieuré, a beautiful fourteenth century priory to be found in a small village location in the Deux-Sèvres department of the Poitou-Charentes region of France. It is about 130 kilometres inland from La Rochelle.

The nearest airport is Poitiers (40.5km) which is about forty minutes from the house.

The nearest main line train station is in Poitiers, which connects to Paris and Lille (with onward connections to London).

The nearest small town is Thénézay, 7km away. The nearest port is Saint-Malo, 313km.



## DISCOVER LOCAL

Country walks - Riding - Golf - Fishing - Lake - Lakeside beach - Canoeing - Windsurfing - Water skiing

A comprehensive list of activities and attractions within the local area can be found on our website under the Discover page.

Thénézay (7km): bank and cashpoint, supermarket, bakery, patisserie, café, bar, petrol station, post office, local market on Sunday mornings.

Gourgé (7km): convenience store, post office (in the convenience store).

Saint-Loup-de-Thouet (9km): restaurant, bar, hotel, pizzeria (does take-aways), convenience store, bakery, antique shop, post office, medical clinic.

Parthenay (15km): hypermarkets, supermarkets, shops, post office, bars and restaurants, banks, medical center, market on Wednesday morning. Beautiful medieval quarter to explore.

Thouars (25km): Great local market on Friday mornings, supermarkets, and general shops found in town.

### MARKETS

Sunday -	Thénézay	8am to 12 lunchtime
Wednesday -	Parthenay	8am to 12 lunchtime
Friday -	Thouars	8am to 12 lunchtime
Saturday -	Airvault	8am to 12 lunchtime



## KITCHEN

The kitchen is semi-circular, with a spiral staircase leading up to the master bedroom in one corner. It is rustic and simple! Breakfast can be taken at the kitchen table which can seat six and is dressed with antique French linen.

You will find a range which is fired by bottled gas, a simple fridge, an electric kettle and a toaster. And a great traditional coffee maker for lazy morning breakfasts!

The kitchen, with its circular walls, does not allow for many gadgets, but should you require any utensil or implement that is not provided, please ask and should we have it, we will provide it!

## GARBAGE DISPOSAL & RECYCLING

Please take all glass to the re-cycling bin at the bottom of the hill, two minutes past the church. Please do not leave any glass in the wood shed, nor in the green or yellow bins. French refuse collectors have an inbuilt radar where glass is concerned and will not take bins with glass in, which will make you very unpopular with the next guests, particularly in summer!

### COMPOST

Please put compost in the bin provided (no egg shells please!) And when full leave at the entrance to L' Atelier garden. The bin will be emptied, washed and returned to you. If you come back next year you may find your veggies growth rate improved by being grown in this year's composted fruit and veg peelings!

### RECYCLING

The recycling is collected every two weeks, so please compress everything as much as possible and place it in the yellow lidded bin.

### RUBBISH

Any rubbish that cannot be recycled in the yellow lidded bin can be disposed of in the green lidded bin (apart from glass).

Access to the garden is required for taking out the bins and recycling. This will be done as discreetly as possible so we don't disturb your holiday.

### CLEANING

You will find cleaning equipment under the kitchen sink and a vacuum cleaner at the bottom of the stairs.



## SHOWER ROOM

The shower room is on the ground floor. There is a walk-in shower, a basin and loo and, behind a beautifully embroidered French linen curtain, a recess where you will find the washing machine. Cleaning materials, washing powder and conditioner are on the shelves for your use.

## SITTING ROOM

The sitting room is in what we believe to be the oldest part of the Priory. The massive mediaeval fireplace is wonderfully cosy when a fire is lit in the cooler months. We will supply wood should you wish to cuddle up in front of a roaring log fire. Please ensure that the guard is in front of the fire for safety and never leave the fire alight when you go out.

The wardrobe for the master bedroom is in the sitting room, occupying the space that was once the doorway connecting the sitting room to the main house. All thought of reconnecting the houses was immediately dispelled when we realised that the door opened directly onto the stone spiral staircase in the Priory. Health and safety obviously didn't feature highly in the 1300's! You will find wooden hangers and a hairdryer in the wardrobe.

The sofa can be made into an additional bed, if required.



## BEDROOMS

La Tour has two bedrooms, each up its own steep spiral staircase. They are not connected and are completely private from each other. One is in what we believe to be the oldest part of the main house, now part of the Tower. The master bedroom is in the semi-circular tower. Both have owls who roost in the deeply recessed mediaeval windowsills (though they have a habit of decamping to the church spire in the summer months!)



The master bedroom has a very comfortable super king-sized bed with hand made drapes. As one young visitor put it, 'The Princess Bedroom'! It is very elegant, simple and we hope you will agree, beautiful.

The second bedroom is accessed from the sitting room. The large room has four single beds, two standard and two antique French and is designed as a fantasy castle bedroom for young knights and princesses! There are toys, books and dressing up clothes – and a low beam to watch out for!





With lovely sheepskin rugs to sit on and the sight of the owls swooping around the church tower and over the garden, it can be magical. The incredibly clear skies make spotting the international space station and the clear constellations perfect entertainment.

Please would you be kind enough to ensure the garden gate is closed and secured when you are in the garden, or go out.

We suggest you bring all cushions and sheepskins inside at night to stop them becoming wet with dew overnight.

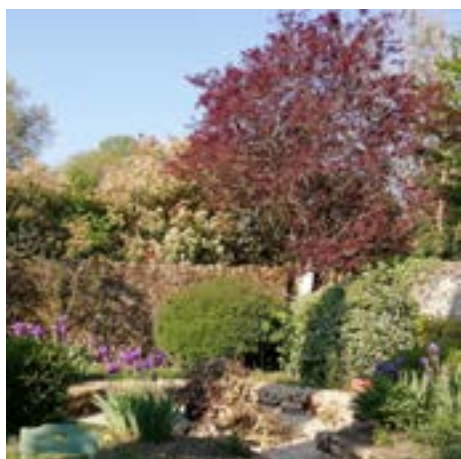
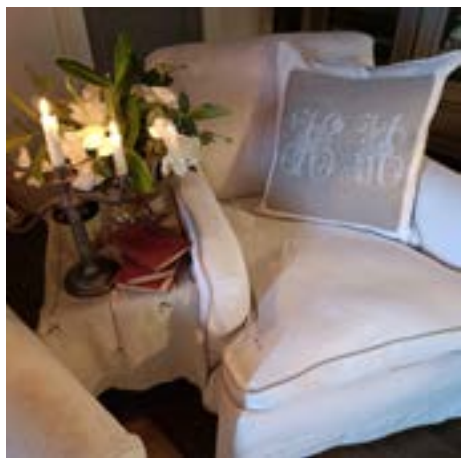
We will need occasional access through the garden to water the pots and tubs, but we will try to ensure that this will be early in the morning.

## GARDEN

The terrace receives the evening sun and is the perfect place for alfresco dining in the summer. A bbq and charcoal are close to the dining table that seats up to 8. There is comfortable seating for relaxing in the sun or in the evening with a cocktail. Pick herbs from the pots in the garden for your bbq marinades and sauces!

The firepit is the perfect place for relaxing in the evening while enjoying a glass of local fizz or a roasted marshmallow.





## FOUR-LEGGED FRIENDS

La Tour has a private, secure garden that is ideal for four-legged friends.

We have dog bowls, blankets, cushions, toys, treats, poo bags and even shampoo! If your dogs prefer their home comforts, please feel free to bring their bed or basket and favourite toys along. We can have a maximum of two dogs in La Tour.

Country trails start from right outside Le Prieuré. Please keep dogs on leads around populated areas. Many country walks, riverside trails and woodland paths in the area are suitable for dogs. For walks around Le Prieuré and further afield, please visit our web page [www.uniquelyfrench/specialextras/dogs](http://www.uniquelyfrench/specialextras/dogs). Here you will find some of our favourite walks mapped out for you. These can easily be downloaded from our site and printed.



## DOG SITTING

For days out, activities and restaurant bookings that aren't suitable for dogs, a dog sitting service is available. Please enquire about this service. Paula will be happy to help on +33 (0)6 74 04 53 15.

### DOG DEDICATED

The local veterinary clinic in Parthenay (English speaking), will arrange an appointment for the necessary tablets for taking your dogs back to England, or any other dog-related issues.

Veterinary Clinic Les Charmilles. 7 rue de l'Yser, 79200 Parthenay, France +33 (0)5 49 64 33 64

## THE LOCAL BOULANGERIE

Delicious bread, gateaux, and pastries are available in Thénezay from our local baker, Monsieur Bergeron. Whether you would like baguettes, pains au chocolat, croissants, scrumptious pastries or a wonderful cake for a special occasion, Monsieur Bergeron and his assistant Sarah are delighted to help. If you need any help with placing your order, Please Whatsapp Paula on +33 (0)6 74 04 53 15

Or you can visit the boulangerie, situated in the square, open daily (bar Wednesday) from 7am to 1.30 pm and 4pm to 7:30pm. Sunday the boulangerie is open until 1:30pm, but get there early as it's the busiest day of the week!



## BEFORE LEAVING:

Please ensure that all glass is taken to the recycling before you leave. A charge of 25 euros is charged if we have to clear glass or rubbish not tidied and cleared as requested.

Please do not put unwanted food in the bins at the end of your holiday. If you could place any vegetables in the composting bin, we will dispose of any other food if you leave it in the fridge. Bin collections have been cut and in 40 degrees of heat, the bins can become very unsavoury.

Please would you strip the bottom sheet, the quilt cover and the top pillowcases from beds and leave them at the bottom of the stairs before you leave. The bedcovers and eiderdowns are antique and we would be very grateful if you would leave these neatly folded when not in use. Thank you!

## BORING BUT ESSENTIAL!

**Kitchen:** The range is fed by bottled gas. There is a spare gas cannister should you run out. Please ask Paula to replace the bottle by speaking to her or contacting her via WhatAapp on +33 (0)6 74 04 53 15

The gas cooker can be delightfully eccentric when trying to light, so do ask Paula if you run into a problem.

There is an independent oven temperature gauge in the kitchen to help if you are cooking anything that requires a precise temperature. If it is a really special dish or cake, the oven in l' Atelier is electric and easier to control. Please ask to use it if you need to!

We get massive storms on occasion. Please disconnect any electrical appliances in La Tour when this happens.

**Garden:** If you are going to light the fire in the fire-pit, please ask Paula to show you where the wood is stored. Please take care and have the fire extinguisher from inside the house close by. Please be aware that in high summer when it is very dry, it may not be safe to light the fire.

If you have any questions or would like help booking a restaurant, organising an outing or just information about things to do and visit in the area, contact Paula on WhatsApp, Paula Dormer +33 (0)6 74 04 53 15

## DESTINATION VISITS

**W**e offer cultural visits for students and visitors to many local sites. A small selection follows, that you might enjoy visiting. Please ask Paula if you would like an accompanied tour.

### PUY DU FOU

From a show in the Roman Arena to a Norman village invaded by Vikings or an interactive walk through the trenches of the First World War, Puy du Fou is France's best kept secret. From 9am to midnight, guests are open mouthed at the shows and displays on offer at Puy du Fou, all based on the history of France, from pre-history to the modern age.

[www.puydufou.com](http://www.puydufou.com)

### FUTUROSCOPE

In Poitiers, the nearest large city to Le Prieuré, Futuroscope offers forty science based attractions in an area of mind boggling buildings – from the upside down house to the cube building that has one point in the ground!

[www.futuroscope.com](http://www.futuroscope.com)

### PARTHENAY

Parthenay and the amazing medieval weavers and dyers road. Pilgrims on the route to Santiago de Compostela from the north of France and Britain would cross the River Thouet and enter the town through the Porte St. Jacques. Hostelries and shops up the cobbled street would then greet them. Today, it's a perfect introduction to medieval France and some of the customs of pilgrimage and weaving and dying.

## POITIERS

The Baptistery of St. John, reputedly the oldest Baptistery in France and the oldest Christian building in the west, built in 360. It is a classic example of Merovingian architecture. With frescos painted in the 12th to 14th centuries still clearly visible, it is a fascinating place to visit, in almost constant use for over 1600 years.

## ST.LOUP

A nearby medieval village on the river, with a stunning, privately owned chateau where it is possible to arrange a private visit.

## THE TUMULUS DE BOUGON

The Bougon burial mounds are among the oldest Megalithic structures on the Atlantic coast, built in the 5th millennium BC (2000 years before the pyramids of Egypt). The number of monuments and their quality of preservation is a rare testimony to a civilization that has now disappeared.



*Puy Du Fou*



*Futuroscope*



*Parthenay*



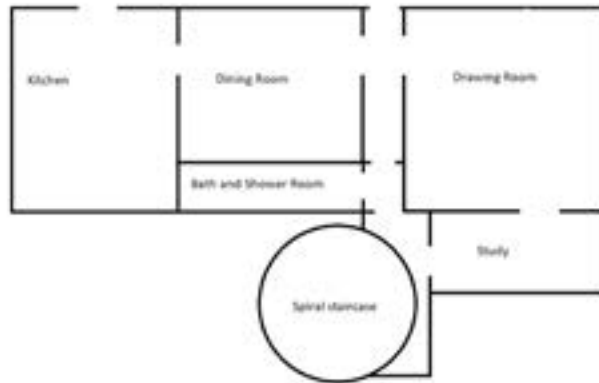
*The Tumulus de Bougon*



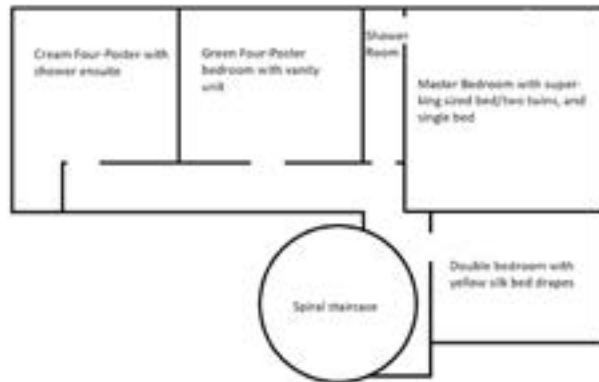
*St. Loup*

LE PRIEURÉ

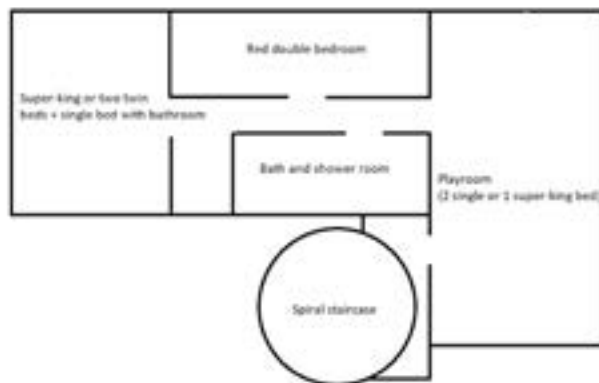
Ground Floor



First Floor



Top Floor



LA TOUR

Ground Floor



First Floor



UNIQUELY  
FRENCH

---